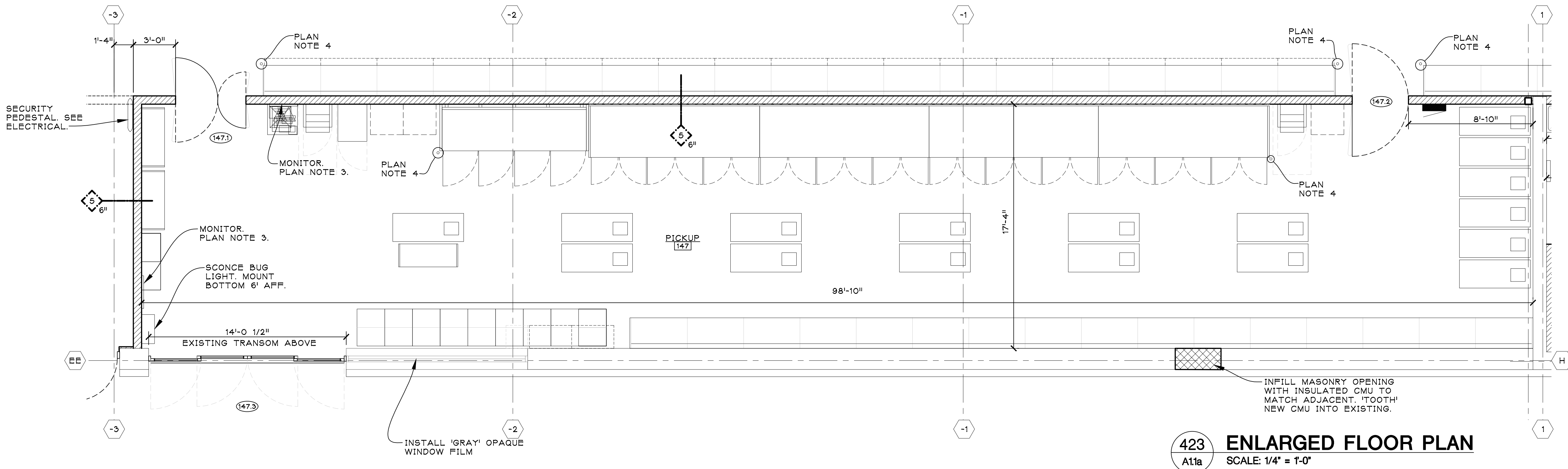
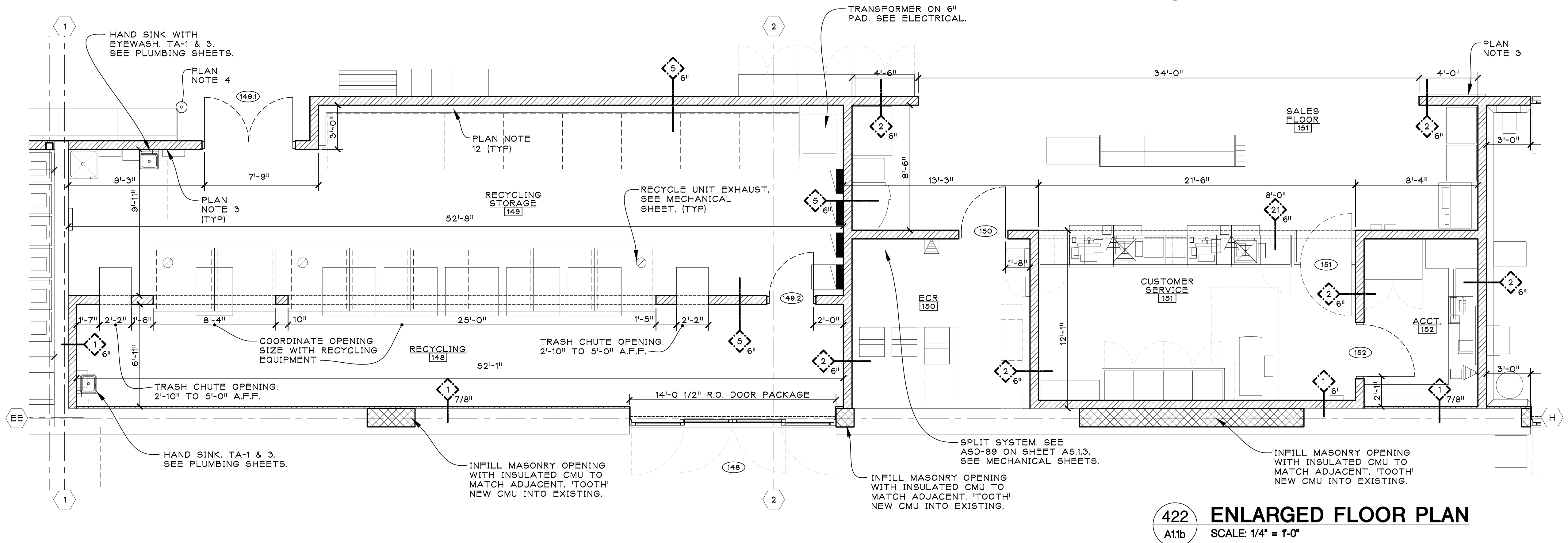


PLAN NOTES (ENTIRE STORE)

1. PROVIDE NEW COLUMN WRAPS ON COLUMNS PER DETAIL ASD-157, SHEET A5.13. SEE PROJECT SPECIFICATIONS SECTION 01 61 13. PAINT COLUMNS ABOVE COLUMN WRAP AND ALL COLUMNS THAT FALL WITHIN SHELVING OR CASES PER THE DECOR SPECIFICATIONS & DECOR DRAWINGS. SEE GISD-50, SHEET A5.14, FOR COLUMNS THAT FALL WITHIN SHELVING. COLUMNS WITHIN PREP AREAS TO BE STAINLESS STEEL FROM FLOOR TO CEILING. SEE ASD-63, A5.12.
2. PARTITIONS TO BOTTOM OF DECK OR JOIST AND PARTITIONS WITH RECESSED EQUIPMENT (ELECTRIC PANELS, FLY GRIDS, ETC.) OR PLUMBING FIXTURES SHALL BE 6" METAL STUDS.
3. PROVIDE WOOD BLOCKING (INSERTED IN METAL STUDS) IN PARTITION THIS AREA, FOR SHELVING BRACKET SUPPORT (6'-0" TO 9'-0") FOR BABY CHANGING STATION (FROM FLOOR TO 8'-0"), EXHAUST HOOD/STAINLESS STEEL (FROM FLOOR TO 9'-10"), FOR WALL MOUNTED FIRE EXTINGUISHERS AND/OR FOR MISCELLANEOUS FIXTURES AND SHELVING AS REQUIRED. SEE SPECIFICATIONS SECTION 06 10 83 FOR ADDITIONAL BLOCKING INFORMATION. PATCH/REPAIR WALL & FINISHES AS REQUIRED WHEN ADDING BLOCKING TO EXISTING WALLS.
4. REMOVABLE PROTECTIVE POST(S) (SALES AREA), SEE SPECS. POST(S) TO BE SUPPLIED AND INSTALLED BY GENERAL CONTRACTOR AFTER EQUIPMENT IS SET. SEE ASD-19 ON SHEET A5.11.
5. REFRIGERATED CASE CORNER GUARD (SALES AREA), SEE SPECS. GUARD(S) TO BE SUPPLIED & INSTALLED BY GENERAL CONTRACTOR AFTER EQUIPMENT IS SET. SEE ASD-160 ON SHEET A5.13.
6. PROVIDE S.S. CORNER GUARD. SEE ASD-55A, SHEET A5.12.
7. ALL REFRIGERATION, PLUMBING, AND ELECTRICAL CONDUIT DROPS ON THE SALES FLOOR ARE TO BE TIGHTLY GROUPED TOGETHER, SECURED SIMILAR TO RISD-34B AND RISD-35 ON SHEET RS.1, AND PAINTED TO MATCH COLUMNS. COORDINATE WITH REFRIGERATION TRADE AND SHEETS R1.1 AND R1.2.
8. ALL REFRIGERATION AND ELECTRICAL CONDUIT CHASES AT ISLAND CASES AND FRONT LINE SERVICE CASES ARE TO BE ENCLOSED IN PVC TUBING AND PAINTED TO MATCH COLUMNS. SEE REFRIGERATION LAYOUT ON SHEET R1.1 AND DETAILS RISD-36 AND RISD-36A ON SHEET RS.1. FOR CHASES THAT EXTEND TO THE FLOOR, COVER WITH STAINLESS STEEL COLUMN WRAP FROM FLOOR TO 5'-0" AFF. (TO MATCH HEIGHT OF EXISTING COLUMN WRAPS). SIMILAR TO ASD-63 ON SHEET A5.12.
9. MODIFY WALL, PATCH & REPAIR AS REQUIRED FOR NEW REFRIGERATION LINES. SEE DETAIL 521, SHEET A5.2.
10. MOUNTING HEIGHT FOR MISCELLANEOUS TOILET ROOM FIXTURES SHALL NOT EXCEED 3'-4" ABOVE FLOOR.
11. DIGITAL MONITOR MENU BOARDS (2). HANG/MOUNT BELOW SOFFIT. SEE DETAIL ASD-72 ON A5.13 FOR MOUNTING DETAILS. GC TO PROVIDE POWER, KROGER VENDOR TO INSTALL MONITOR AND PROVIDE. INSTALL ALL REQUIRED HARDWARE (UNISTRUT, THREADED ROD, AND MOUNTING BRACKET). KROGER VENDOR TO PROVIDE ALL LOW VOLTAGE WORK. ADJUST ANGLE & HEIGHT OF MONITORS FOR BEST VIEW OF THE DISPLAY. VERIFY LOCATION WITH KROGER PM.
12. CONCRETE CURB. SEE ASD-6 & ASD-6A, SHEET A5.11. SEE CONCRETE PLAN ON SHEET A1.2.
13. KITCHENETTE MILLWORK (CABINETS, COUNTER, SINK, TA-1 & TA-3). PLAN NOTE 3. SEE PLUMBING SHEETS.
14. SEE GISD-2, SHEET A5.14 FOR CLOSE OFF AT REFRIGERATED CASES AGAINST WALLS.
15. SEE GISD-15A, SHEET A5.14 FOR WALL MOUNTED PC WORKSTATION. PROVIDE BLOCKING, SEE PLAN NOTE 3.
16. SEE GISD-16A, SHEET A5.14 FOR SHELVING IN COOLERS & FREEZERS.
17. SEE GISD-24, SHEET A5.14 FOR BUILDING PLAN STORAGE BOX.
18. PROVIDE BACKER ROD AND SEALANT BETWEEN WALL AND INSULATED PANEL. SEALANT TO MATCH COOLER WALL, FOR 1" SPACE OR LESS. PROVIDE INFILL WITH STUD, GYPSUM BOARD, & APPROPRIATE WALL FINISH OVER EXPOSED AIR SPACE GREATER THAN 1" BETWEEN INSULATED PANELS & WALL COMBINATIONS. PROVIDE AIR TIGHT INFILL BETWEEN WALLS, COOLERS, OR FREEZERS AND NEW INSULATED PANELS AT THE SIDES & ABOVE OPENINGS IN THE INSULATED PANELS.
19. SPRAY DOWN AREA WITH 8" CMU, 8'-0" HIGH WALLS. DOWEL WALL INTO SLAB AT 32" O.C. AT FIRST COURSE (GROUT SOLID). SEAL WALL AT FLOOR WITH POLYURETHANE SEALANT. EPOXY PAINT CMU WALL.



423 ENLARGED FLOOR PLAN
SCALE: 1/4" = 1'-0"

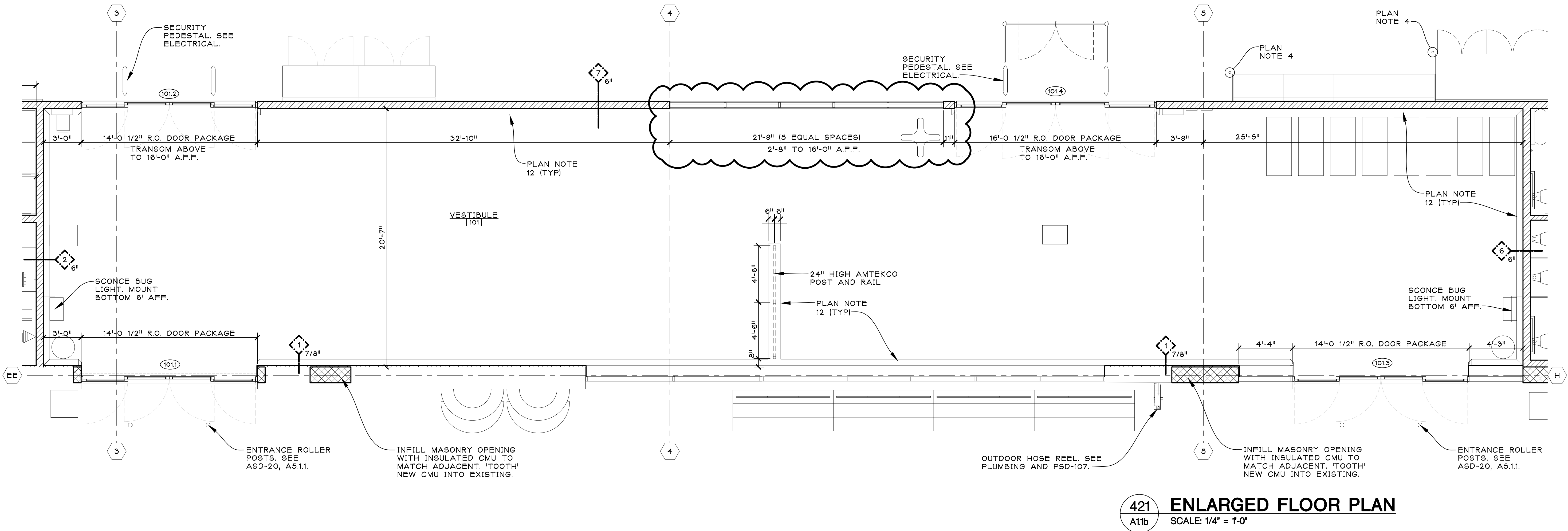


422 ENLARGED FLOOR PLAN
SCALE: 1/4" = 1'-0"

- SEE GENERAL NOTES ON SHEET A1.1
- SEE SHEET 11.4 FOR FINISHES DECOR, MILLWORK, & FIXTURE / CASE NOTES.

PARTITION KEY

EXISTING WALL	EXISTING SOFFIT
NEW WALL	NEW SOFFIT



421 ENLARGED FLOOR PLAN
SCALE: 1/4" = 1'-0"

BULLETIN NO. 7
BULLETIN NO. 3
ADDENDUM NO. 3
BIDS AND PERMITS
80% OWNER REVIEW
08/22/2025
08/13/2025
03/14/2025
02/11/2025
12/18/2024

ISSUED FOR:

PROPOSED NEW STORE TAKEOVER FOR:

Kroger

STORE NO. D-416
15100 SILVER PARKWAY
FENTON, MI 48430

THE KROGER CO. OF MICHIGAN

jeffery a. scott architects p.c.

32316 grand river ave. suite 200
farmington, michigan 48336-3261
(248) 476-8800 fax (248) 476-8833

ENLARGED PLANS, DETAILS, NOTES

project no.	sheet no.
24108	A4.2

copyright © 2025
PLOT FULL SIZE • 30"x42"